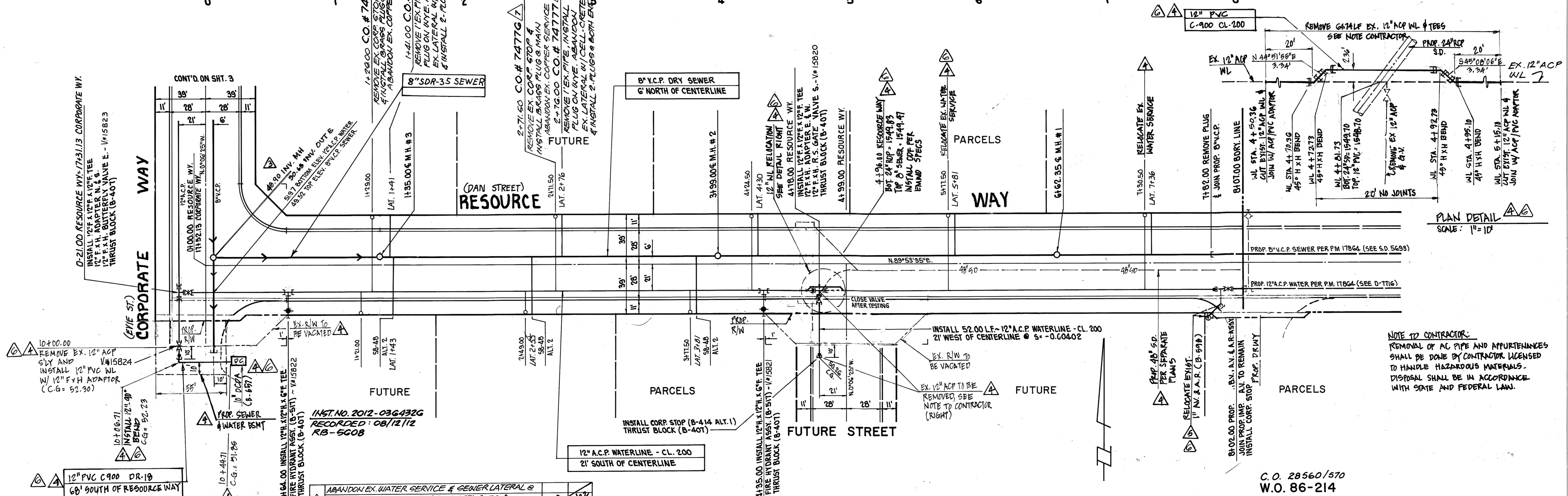
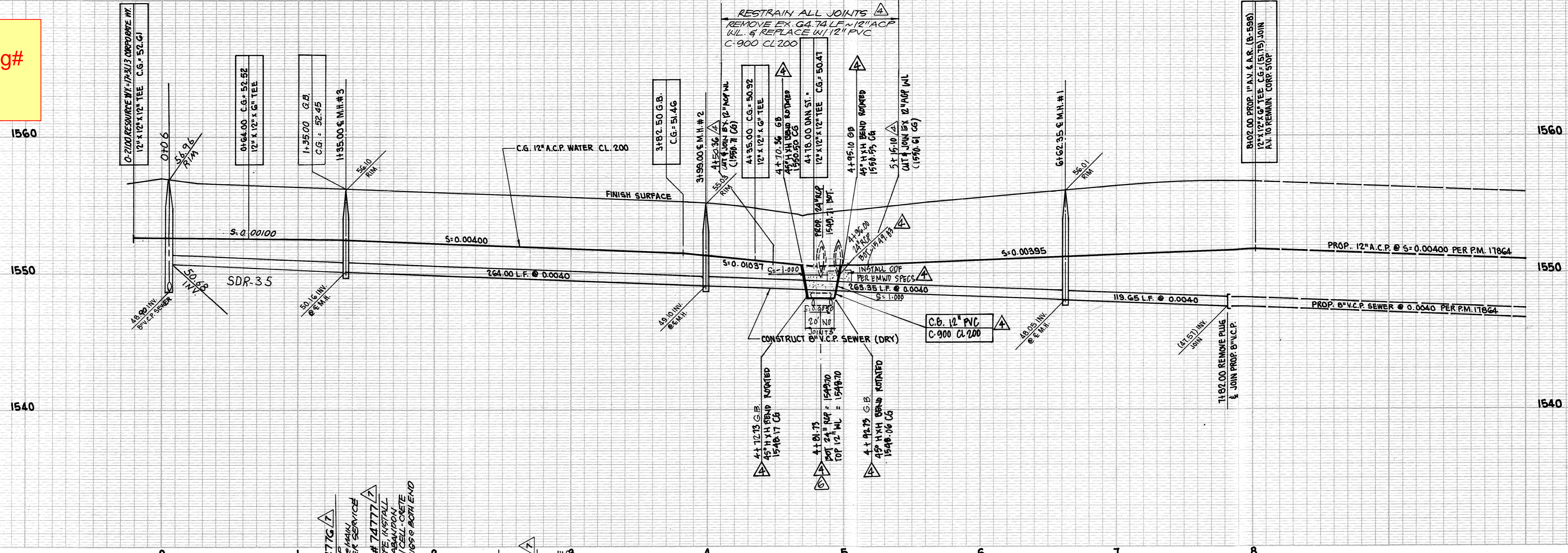
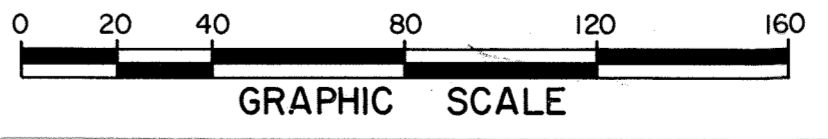


Original EMWD Drawing#  
D-8259



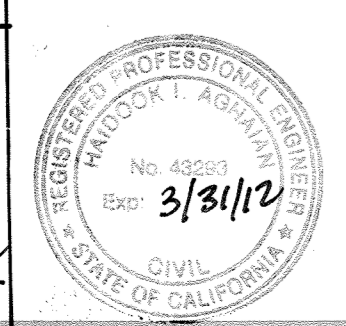
NOTE TO CONTRACTOR:  
REMOVAL OF AC PIPE AND APPURTENANCES  
SHALL BE DONE BY CONTRACTOR LICENSED  
TO HANDLE HAZARDOUS MATERIALS.  
DISPOSAL SHALL BE IN ACCORDANCE  
WITH STATE AND FEDERAL LAW.



C.O. 28560/570  
W.O. 86-214

C.O. 684G1/02

REVISION ONLY  
Thienes Engineering, Inc  
14349 FIRESTONE BLVD  
LA MIRADA, CA 90638  
PH-714-921-4011  
Handbook 1/23/12  
HANDOOK 1 AGHAMIAN RCE 43393 DATE



COUNTY OF RIVERSIDE  
DEPARTMENT OF HEALTH  
APPROVED BY:  
John C. Oster  
DATE: 12.10.05

WATER / SEWER APPROVED BY:  
EASTERN MUNICIPAL WATER DISTRICT  
APPROVALS  
DESIGN CONSTRUCTION OPERATIONS SUBMITTED

REVISIONS:  
AS CONSTRUCTED C.O. 28560/70 (CR 3-0-00) KER 3-15-93  
12-24-02 RE. AS CONST. CR. 2-12-02 CO. 64388 12-24-02 RE  
CLARIFY AS BUILT 0-15-00  
RELOCATE EX. 12\"/>

EMWD INSPECTOR DEAN CORNISH  
APPROVED BY:  
DATE: 4-18-05  
APPROVED BY:  
DATE: 12/11/05

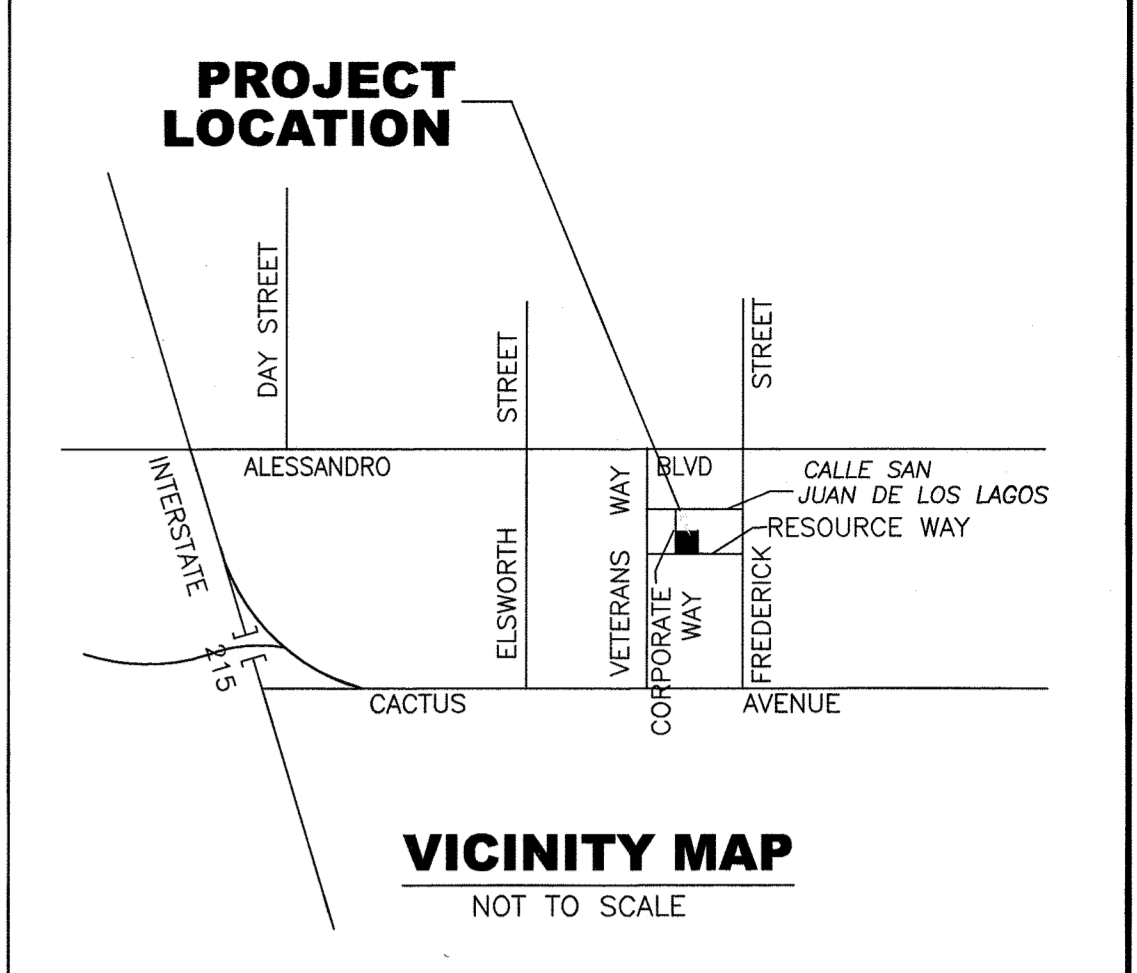
G.V.W. ASSOCIATES, INC.  
667 BRECA CANYON ROAD SUITE 27  
WALNUT, CALIF. 91789  
SCALE: 1" = 40'  
PROFILE SCALE:  
HORIZ. 1" = 40'  
VERT. 1" = 4'  
DATE APRIL, 1985

IMPROVEMENT DISTRICT IO & U-13  
PARCEL MAP NO. 17864  
COUNTY OF RIVERSIDE  
OFFSITE SEWER & WATER PLANS  
RESOURCE WAY  
(DAN STREET)  
2 OF 3 SHEETS  
FILE NO.

New EMWD Drawing# D-62365

(Created from the information found on D-8259)

# CITY OF MORENO VALLEY MORENO VALLEY RESOURCE CORPORATE CENTER BUILDING OFFSITE SEWER AND WATER IMPROVEMENT PLAN



STA 2+63.09 PER D-8259 17 GPM S.O.# 262907

INSTALL 1 1/2" SERVICE CONNECTION W/O METER PER B-342A  
FUTURE 1" METER  
LANDSCAPE USAGE

STA 2+68.09 PER D-8259 52GPM S.O.# 262906

INSTALL 2" SERVICE CONNECTION W/O METER PER B-344A  
FUTURE 1.5" METER  
DOMESTIC USAGE

STA 2+73.09 PER D-8259 C.O.# 7477G

INSTALL 6"x4"x2 1/2"x 2 1/2" SUPER FIRE HYDRANT PER B-517

STA 2+63.09 PER D-8259

4" FxH 90° BEND  
4" FxH RSGV (N) WITH  
COMPANION FLANGE  
(B-658)

4" HxHxF TEE  
W/4" FxH RSGV (N) B-658

4" PVC C-900 DR18  
RESTRAIN ALL JOINTS

8" PVC C-900 DR18  
RESTRAIN ALL JOINTS

STA 2+73.09 PER D-8259

8" FLANGED TEE  
6" FxH RSGV WITH 8"x6" FxH ECCENTRIC REDUCER (N)  
4" FxH ADAPTOR (W)

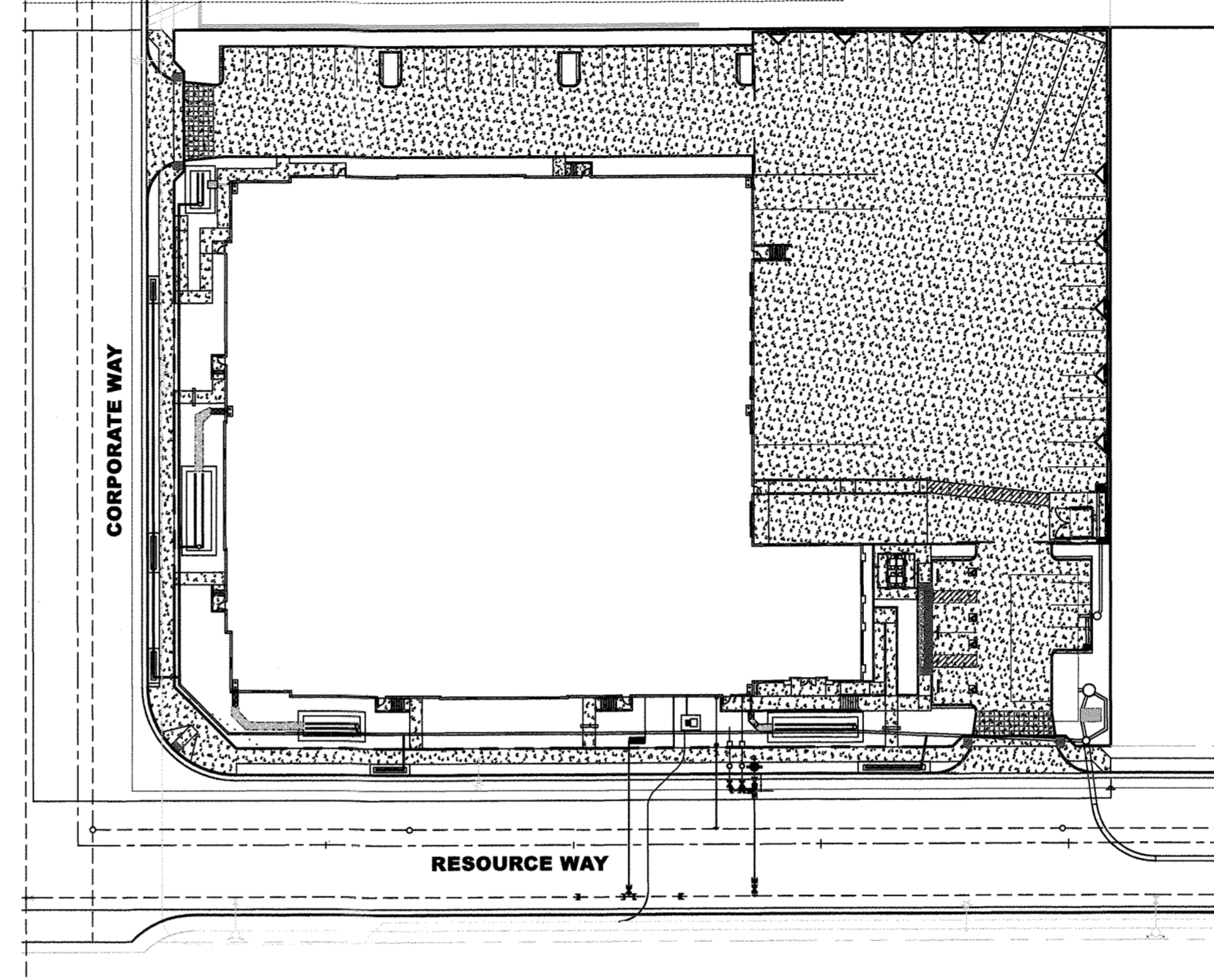
C.O.# 7477G

STA 2+73.09 PER D-8259

HOT TAP EX 12" ACP WATER  
LINE WITH 12"x8" TAPPING  
SLEEVE WITH 8" FxH RSGV BY  
EMWD/APPROVED CONTRACTOR @  
DEVELOPERS EXPENSE

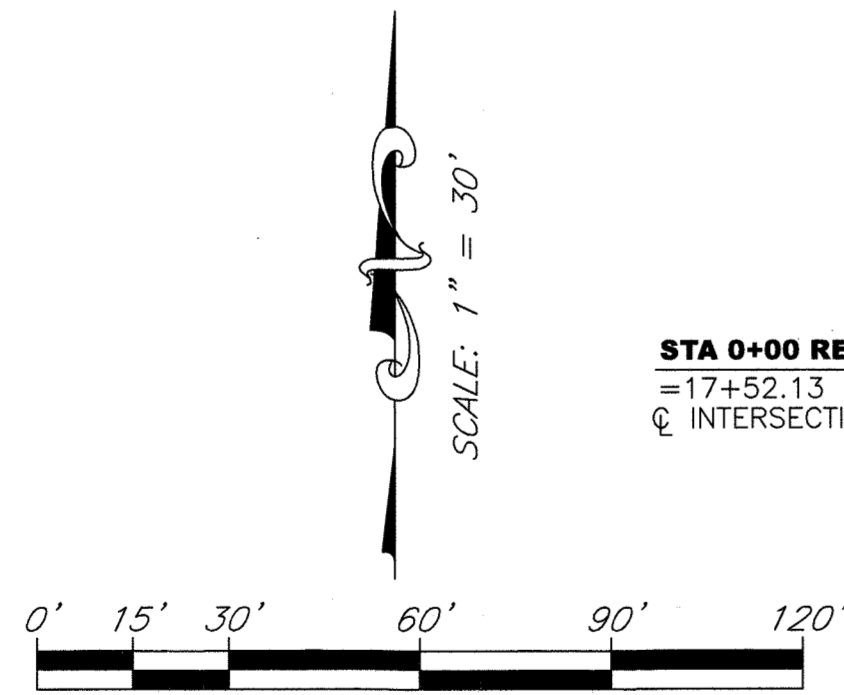
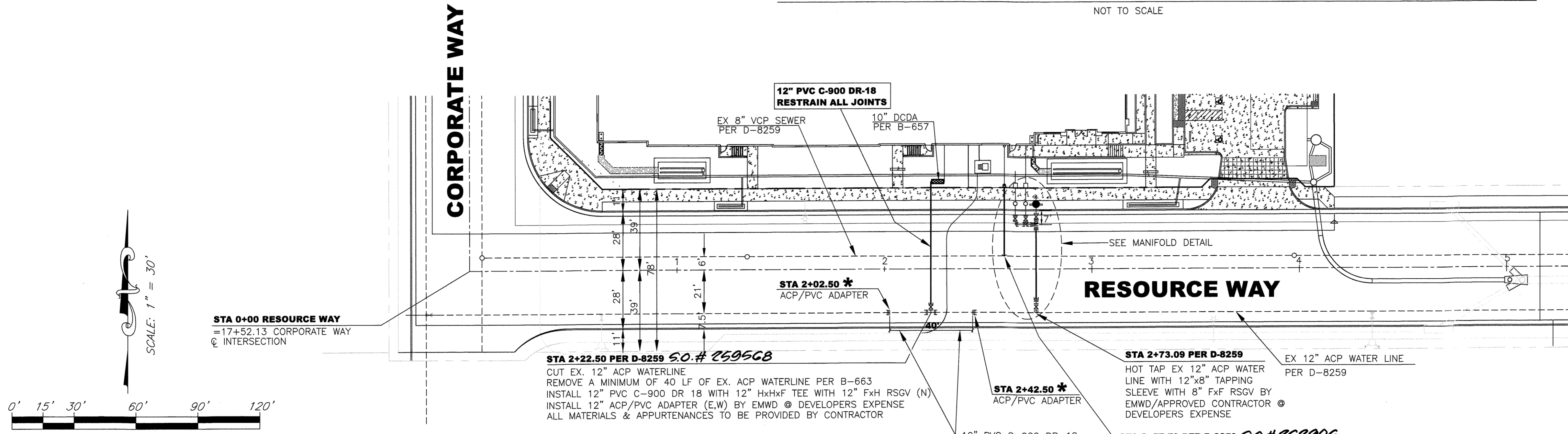
## STA. 2+73.09 MANIFOLD DETAIL

NOT TO SCALE



## OVERALL SITE PLAN-22830 RESOURCE WAY, MORENO VALLEY

NOT TO SCALE



STA 0+00 RESOURCE WAY  
=17+52.13 CORPORATE WAY  
Q INTERSECTION

### \* NOTE: ACP REMOVAL

REMOVAL OF ACP PIPE AND APPURTENANCES  
SHALL BE DONE BY CONTRACTOR LICENSED TO  
HANDLE HAZARDOUS MATERIAL. DISPOSAL  
SHALL BE IN ACCORDANCE WITH STATE &  
FEDERAL LAW

NO WORK SHALL BE DONE ON THIS  
SITE UNTIL BELOW AGENCY IS NOTIFIED  
OF INTENTION TO GRADE OR EXCAVATE.  
CALL TOLL FREE  
1-800-422-4133  
Two Working Days Before You Dig  
WWW.CALL811.COM

BENCH MARK:	M-61-69
BASIS OF BEARING:	THE BASIS OF BEARINGS FOR THIS PLAN IS THE CENTERLINE OF CALLE SAN JUAN DE LOS LAGOS PER PM 177/ 118-20. BEING N89°53'07"E
ELEVATION:	1569.963 (1929 DATUM)

MARK	REVISION	APPR	DATE

CITY OF MORENO VALLEY	
RECOMMENDED BY:	MICHAEL D. LLOYD, RCE 69563 DATE
ENGINEERING DIVISION MANAGER / ASSISTANT CITY ENGINEER	
APPROVED BY:	MICHAEL L. WOLFE, RCE 65623 DATE
PUBLIC WORKS DIRECTOR/CITY ENGINEER	



<b>Southland Engineering</b>
2200 BUSINESS WAY, Ste. 100 RIVERSIDE, CA 92501 (951) 788-8488
PREPARED UNDER THE SUPERVISION OF:
<i>Allen W. Martin</i> 10/12/21
ALLEN W. MARTIN, RCE 38463 DATE

SEWER AND WATER APPROVED BY	
EASTERN MUNICIPAL WATER DISTRICT	
PROJECT ENG	INITIAL DATE
<i>L.A.M.</i>	10/14/21
APPROVALS	

CITY OF MORENO VALLEY	
RESOURCE CORPORATE CENTER 22830 RESOURCE WAY OFF-SITE SEWER AND WATER PLANS	

ID NO. 10 & U-13
S.A. 41/32
S.O.# 259568
COORD 54-A-B
SHEET 1 OF 1
D-62365