



BE SEWER SMART

Preventing Sewer Spills

EMWD's Wastewater Collections department is out in the community every day keeping the sewers flowing.

Sewer overflows are often caused by pipeline blockages. EMWD's strategic priorities include preventative and predictive maintenance that enable highly reliable operations. EMWD's Wastewater Collections department performs daily cleaning and maintenance of manholes, pipelines, and sewer lift stations throughout our service area. With an average of 700 miles of pipeline serviced each year, EMWD's 1,960 miles of sewer pipeline is kept in top working condition. To learn what you can do to keep the sewers flowing, visit emwd.org/preventing-sewer-spills.

INSIDE THIS ISSUE

How to Maintain Healthy Sewers

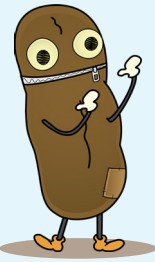
Overflowing sewers can negatively affect public health. Patrick the Poo explains how you can help ensure the safety of our communities.

Seasonal Events and Dates to Know

November marks the beginning of the holiday season. Check out our calendar of upcoming special events and reminders.

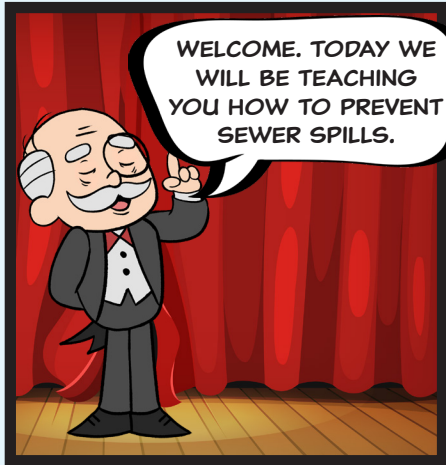
Ask EMWD Explains HOA Fines in a Drought

A well groomed neighborhood is one of the many benefits of having an HOA. But can they require you to water your lawn during a drought?



Patrick the Poo Presents:

HOW TO KEEP A HEALTHY SEWER



WELCOME. TODAY WE WILL BE TEACHING YOU HOW TO PREVENT SEWER SPILLS.



HI. I'M PATRICK, AND I'M A PIECE OF POOP!

RIDE ALONG WITH ME AS I GO THROUGH EMWD'S WASTEWATER SYSTEM.



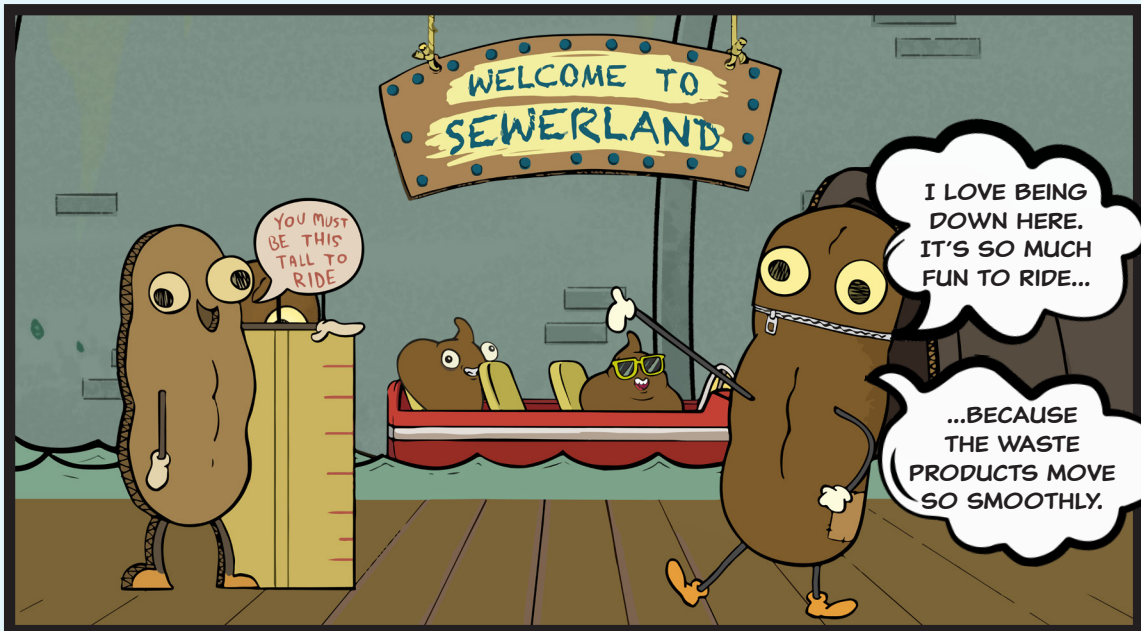
EXCEPT WHEN THERE'S STUFF DOWN HERE THAT SHOULDN'T BE HERE!



IF ANYTHING OTHER THAN THE 3 P'S END UP IN HERE THE SEWER CAN GET BLOCKED.



AND THAT CAN RUIN THE RIDE. NOT TO MENTION MAKE AN EXPENSIVE MESS.



WELCOME TO SEWERLAND

YOU MUST BE THIS TALL TO RIDE

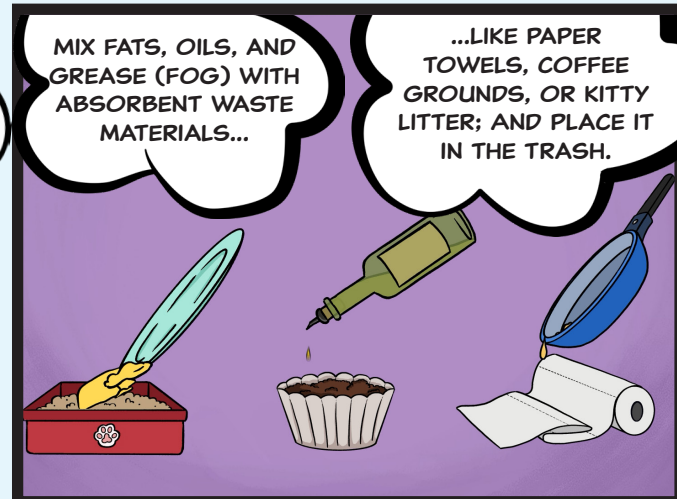
I LOVE BEING DOWN HERE. IT'S SO MUCH FUN TO RIDE...

...BECAUSE THE WASTE PRODUCTS MOVE SO SMOOTHLY.



TAKE THESE SIMPLE STEPS TO HELP MAINTAIN A HEALTHY SEWER.

AND ENSURE THE SAFETY OF OUR PIPES AT HOME AND IN THE COMMUNITY.



MIX FATS, OILS, AND GREASE (FOG) WITH ABSORBENT WASTE MATERIALS...

...LIKE PAPER TOWELS, COFFEE GROUNDS, OR KITTY LITTER; AND PLACE IT IN THE TRASH.



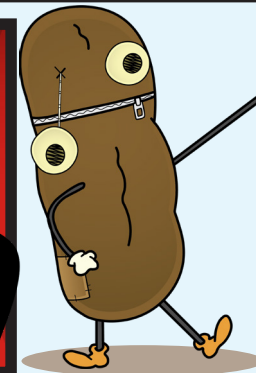
WIPE FOOD SCRAPS FROM PLATES AND PANS AND DUMP THEM IN THE TRASH.

RATHER THAN IN THE GARBAGE DISPOSAL.



TO LEARN MORE ABOUT HOW YOU CAN HELP EMWD MAINTAIN A HEALTHY SEWER...

VISIT EMWD.ORG/SEWERSMART



DON'T BE A PAIN IN THE DRAIN OR RUSH TO FLUSH



BE SEWER SMART



2270 Trumble Road
 P.O. Box 8300
 Perris, CA 92572-8300
 www.emwd.org

EMWD Main Phone Number:
 951.928.3777

EMWD Customer Service:
 800.426.3693

Job Hotline: ext. 3300

Conservation Hotline: ext. 3322

Water Quality: ext. 3327

Systems Outages, Trouble Calls:
 ext. 6265 or 800.698.0400

Public and Governmental Affairs:
 ext. 3430
 PublicandGovtAffairs@emwd.org

EMWD publications are designed to keep EMWD's customers and the public informed of matters affecting them.



@EASTERNMUNI

30902-I-0148

Upcoming Events and Dates to Know

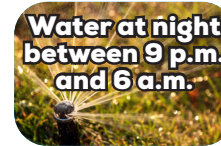
Daylight savings and World Toilet Day are just a few of the special occasions in November.

As we enter this holiday season, EMWD is thankful for our customers, partners, and the communities we serve.

During our upcoming holiday office closures, customers may still access their accounts at emwd.org/MyAccount.



Healthy Sewers Awareness Month
 November 2022



Daylight Savings Ends
 November 6, 2022



Office Closed for Veterans Holiday
 November 11, 2022



America Recycles Day
 November 15, 2022



World Toilet Day
 November 19, 2022



Office Closed for Thanksgiving Holiday
 November 24-25, 2022



Can my HOA fine me for not watering my lawn during the drought?

During California's previous drought, the State Water Resources Control Board adopted regulations stating that Homeowners Associations (HOA) could not issue fines during a state or regional drought emergency, and those rules remain in place.

HOA's are also not able to prohibit you from installing drought-tolerant landscaping as a way to save water, and also may not require homeowners to pressure wash their homes or hardscapes during a drought.

HOA's can issue citations if your landscape is unkept, so while you can let your lawn go brown, it is important to keep the property free of weeds and well maintained.

EMWD is working with HOA's throughout its service area to ensure they are partners in water use efficiency as we all do our part during this historic drought.

Submit your question at emwd.org/AskEMWD for a chance to have it featured in a future monthly EMWD newsletter!

